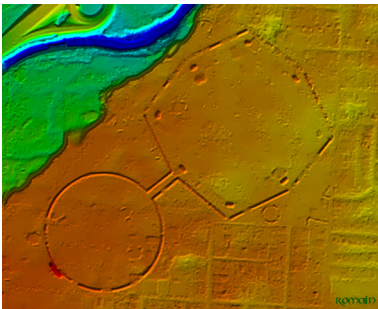
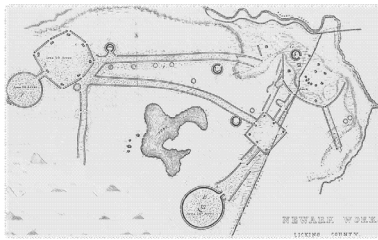


OCTAGON STATE MEMORIAL OPEN HOUSE



APRIL 10

OCTAGON EARTHWORKS*

125 N. 33RD ST., NEWARK OH

SELF-GUIDED TOURS AVAILABLE DAYLIGHT TO DUSK

2 P.M.:GUIDED TOURS

**with Associate Professor John Low, PhD,
director of the Newark Earthworks Center**

The Octagon State Memorial is one of the most spectacular surviving remnants of the Newark Earthworks. Displaying a sophisticated understanding of geometry and astronomy, the Octagon is connected to a perfectly circular enclosure 1,054 feet in diameter. It is a National Historic Landmark that is on track to become a World Heritage site!

TRANSPORTATION

Students who need transportation to the Octagon Earthworks must complete this form by April 7 at 5 p.m. go.osu.edu/April10

4 P.M. GALLERY TALK

**Join us on campus in LeFevre Hall Art Gallery
1199 University Drive, Newark Ohio**

Artist Gerry Lang, a member of Chowanoke Nation, will discuss his exhibit "Return from Exile: the Mixed-Blood art of Gerry Lang" which is currently on display in the LeFevre Hall Art Gallery.

** Masks are no longer required but please continue to practice social distancing wherever possible.*



**THE OHIO STATE
UNIVERSITY**

NEWARK